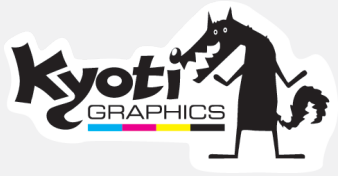


Social Distancing Solutions

We make it happen.





Contents

- 4. **The T3 Modular System**
- 6. **Desk Dividers**
- 8. **Desk Partitions**
- 10. **Freestanding Walling**
- 14. **Hinged Walling**
- 16. **Retail Screens**
- 18. **Internal Queuing Systems**
- 19. **Signage**
- 20. **Premium Solutions**
- 24. **Backdrops**
- 26. **Essentials**

The T3 Modular System

We are constantly adapting and innovating by providing solutions for everyday challenges, whether they are exhibition stands, events, conferences, modular, customisable or reconfigurable framework.

Using the versatility of the T3 modular system, our portfolio of solutions now supports a range of environments that need to implement a temporary change in operation, by reducing risk and implementing structures to enforce social distancing.

Our social distancing range offers temporary and permanent solutions to help reduce risk and provide support for taking precautions in day-to-day activities. All of which, can be built in a matter of minutes and without the need for tools.

All products within the range are available in standard sizes and branding, but customisable options are also available to meet individual requirements.

Key Features

- T3 is the world's most versatile modular display system
- Unique reconfigurable design
- No tools required and easy and quick to build
- Premium finish using high quality materials
- Modular to adapt over time
- Multiple sizes available or bespoke to suit your room layout
- Range of customisable options and complementary products to create complete solutions for your environment
- Wipes clean with alcohol based products
- Made using lightweight aluminium and manufactured in the UK
- Suitable for a range of environments including offices, schools, call centres, co-working spaces, in-store retail, and more



GOT AN IDEA? SEND US A SCRIBBLE!
RECEIVE QUOTE AND VISUAL WITHIN
24-HOURS.



Desk Dividers

CUSTOMISE TO YOUR ENVIRONMENT
WITH COLOURED BEAMS, FROSTED OR
CLEAR ACRYLIC, AND ADD GRAPHICS.

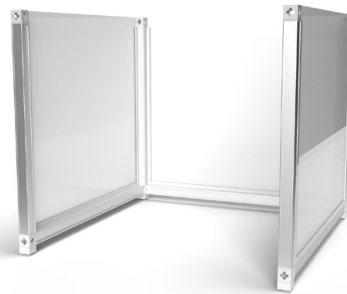
Protect individuals by creating separation dividers between desks and workstations. Designed to keep distance and reduce risk, our range of desk dividers are fully customisable to create a unique solution for your environment.

Build these desk dividers in a matter of minutes and with no tools!

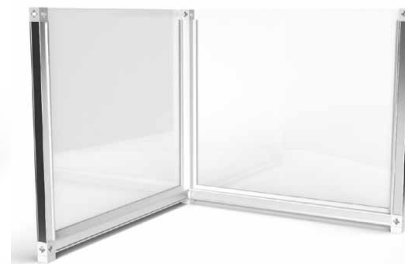
The unique modularity of T3 means you can adapt and reconfigure all our products to continue meeting your needs over time.

Combine these with other products to create a complete solution for your chosen environment.

U-shaped



L-shaped



Straight



- Quick and easy build
- No tools required - just twist and lock
- Brand with print or stickers
- Aluminium beams with acrylic infill
- Custom sizes available
- Coloured beams available
- Clear, frosted or tinted acrylic

Floor standing



- Modular, premium finish product
- Sturdy mount onto desks
- Link together for specific desk layouts
- Customisation options available: tinted or frosted acrylic infills, coloured framework
- Reconfigurable: add or remove components with ease
- Fixed or freestanding options available
- Adjustable feet provided
- Exact desk height dimensions required



Acrylic



- Low cost and fast implementation
- Customised individually to each desk
- Mobile flexibility for when workplace layouts change
- Ideal solution for adjustable desks
- Wipeable for easy cleaning
- Zero build time - just drop into place and can be customised to fit around existing features
- Can be made to any size and shape
- Brand with simple stickers



Suitable for a wide range of environments.

Desk Partitions

Use modular walling to separate desks and workstations. Designed as partitioning to protect and reduce risk between individuals. All desk partitions are fully customisable to meet exact requirements including sizing, materials and branding.

The modular benefit of T3 means your solution can adapt to a range of different applications over time. Perfect for workspace layout changes, temporary storage solutions, partitions and dividers, semi-private zones, and more.

Combine with other social distancing products to create a complete protected environment.

Fabric partitions



CUSTOMISE TO YOUR ENVIRONMENT
WITH FABRIC GRAPHICS.



Part acrylic partitions



1.5m high



2m high



Product Features

- Unique reconfigurable design
- Customisable option available for any environment
- Wipes clean with alcohol based products
- Premium finish using high quality materials
- Manufactured in the UK
- Made using aluminium and can be clad with a range of materials
- Bespoke to suit to individual office layouts
- Modular to adapt over time
- Suitable for a range of environments including offices, schools, call centres, co-working spaces



CUSTOMISE YOUR SOLUTION TO MATCH YOUR ENVIRONMENT WITH COLOURED BEAMS, FROSTED OR CLEAR ACRYLIC, AND PRINTED GRAPHICS.



Freestanding Walling

A range of complementary products designed to create zoning, walkways, partitions, and semi-private workspaces to provide safety barriers between individuals. Ideal for dividing open plan spaces, whilst still providing line of sight.

Brand and personalise your walling to design your space with a range of materials including acrylic, fabric, Dibond, and Foamex. All of which can be customised to suit a range of purposes.

T3's modular capabilities make it easy to reposition as required!

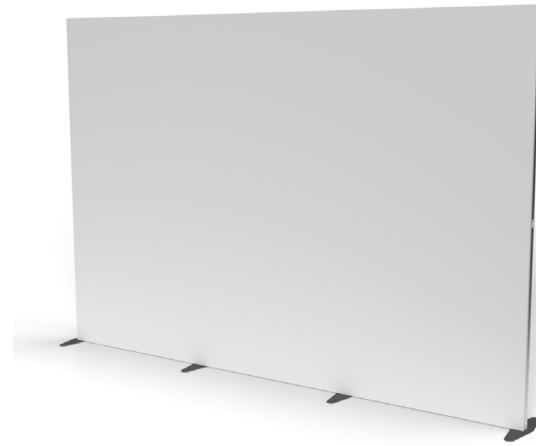
- Modular walling for maximum flexibility
- Panels join together to create infinite walling configurations
- Flexible for a huge range of applications
- Walls are 2m or 1.5m high
- Fast to build without the need for tools and can be flat packed when not in use
- Customisable options available



Single skin walls have exposed beams to the reverse.

AVAILABLE IN A RANGE OF
STANDARD AND CUSTOM SIZES TO
SUIT YOUR NEEDS.

Any combination of walling to transform your space.



Walling is available in 1m, 2m, and 3m sections and can be joined together to create even longer walls.



Walling is provided with either flat feet or wheels for complete mobile flexibility.



Choose fabric, acrylic, or a combination of acrylic with Dibond and Foamex, to create the look you desire.

SEND US A SCRIBBLE, AND WE WILL DESIGN YOUR WALLING TO SUIT YOU.

- Full turnkey solution
- Free design service
- Modular and reconfigurable
- Design, build and deliver
- Self-build system requiring no tools
- Site surveys and installation service

Freestanding Walling

Any combination of walling to transform your space.



Full height acrylic panel and aluminium frame



Two section acrylic panels and aluminium frame



Coloured frame and graphics to acrylic



Acrylic top panel and Dibond or Foamex lower section



Add graphics and coloured framework



Join panels to create functional zoning



Whether you choose fabric, acrylic or a combination of substrates, the range of freestanding walling is certain to deliver the look you desire.

SEND US A SCRIBBLE, AND WE WILL DESIGN YOUR WALLING TO SUIT YOUR SPACE.

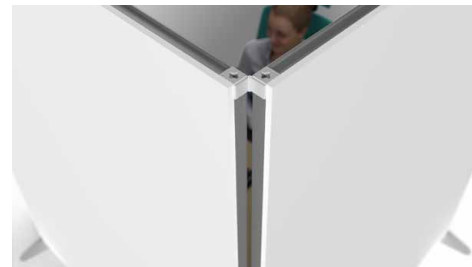


Hinged Walling

Divide open plan spaces with quick and easy-to-build modular hinged walling. Designed to cover large areas within environments to safeguard all occupants and reduce risk by implementing social distancing measures between desks and workstations.

Ideal for breaking up open plan spaces. Fast to build without the need for tools and can be flat packed when not in use.

- Unique reconfigurable design to suit individual requirements
- Premium finish using high quality materials
- Manufactured in the UK
- Modular to adapt over time
- Designed to protect and reduce risk over large areas
- Suitable for a range of environments including offices, schools, call centres, co-working spaces



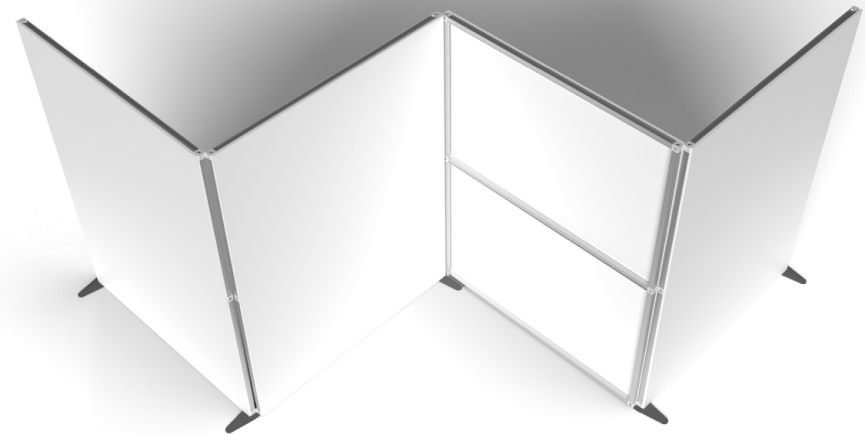
The flexibility to create zoned areas in a multitude of environments.



Design your space with customised walling.

AVAILABLE IN A RANGE OF
STANDARD AND CUSTOM SIZES
TO SUIT YOUR NEEDS

Position hinged walling exactly how you need it.



Retail Screens

Screening for retail environments to protect both staff and customers. Ideal for checkout and serving areas, to reduce risk without compromising human interaction and service.

Our easy-to-build, modular screening can be customised to meet your requirements. With options available for cut-outs, print for both stickers and directly to the acrylic surface, and coloured T3 Deco beams.

Product features:

- Fully customisable for seamless integration
- Speed and ease of build
- Easy to adjust and move around for different areas
- Our polycarbonate options are easy to clean and wipe down in environments dealing with food and drink
- No tools required
- Customised options available to meet individual requirements

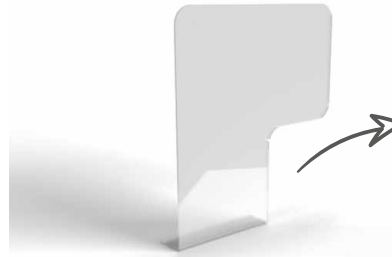
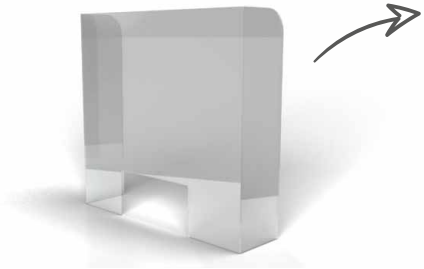


Countertop screen

Freestanding screen



TEAM WITH FREESTANDING WALLING AND OTHER SOCIAL DISTANCING PRODUCTS FOR THE COMPLETE SOLUTION.



Fully customisable for seamless integration.



Internal Queuing Systems

Our queuing systems are designed to cope within high footfall areas to social distance between individuals. Great for retail environments and areas where queuing is inevitable.

T3's toolless system makes it quick and easy to build, and options are available to reconfigure to meet alternative space and size requirements. Customisable options are available for graphic branding and personalisation.

- Ideal for shopping centres, supermarkets and other temporary areas where queuing is required
- Easy to build and dismantle for storage overnight
- Modular and quick to build
- No tools required
- Branding options available
- Combine with floor stickers and sanitiser stations for a complete solution

Branded panels



Queue management



Separation screens



SEPARATION SCREENS AND QUEUE MANAGEMENT SOLUTIONS.

FAST ASSEMBLY, REPOSITION WHEN NEEDED, AND PACKS FLAT WHEN NOT IN USE.

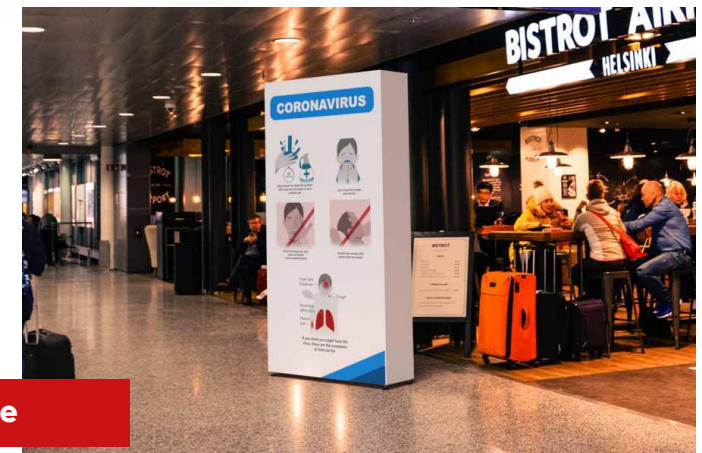
Signage

Create high impact messaging using T3 modular walling to create informational checkpoints and signage.

- Graphic panels available in rigid, semi-rigid, and fabric
- Flexible for a whole range of applications and environments
- Fast to build and can be packed down easily when not in use!
- Reusable, simply change the graphics
- Combine with floor stickers and sanitiser dispensers
- Walls are 2m high and as long as you need



Mobile signage





Premium Solutions

Our range of premium solutions allows you to create a bespoke and personalised environment, whilst also recognising the need for social distancing.

Take your modular walling a step further to create bespoke customised environments. We will design personalised features to transform workplaces, office spaces, schools, and co-working environments.

Don't be restricted to standard sizing or graphics, with T3, you've got the option to do it all! And over time, with T3's modularity, you can adapt and reconfigure to fit new environments and purposes.

Modular and quick to build, without tools, our premium solutions enable you to design your environment with the flexibility to change it in the future.

Using aluminium coloured beams, choose from a range of materials including acrylic, Dibond, Foamex, and fabric to complement your design. Add graphics to personalise to your brand.



Complete customisation for total flexibility.



Consider how you can create more functional environments for long term solutions. Add storage and counter space into your partitions and walling. Think sliding doors, cupboards, and shelving to achieve a complete look and add personality to your space.



SEND US A SCRIBBLE, AND WE
WILL DESIGN YOUR SOLUTION
TO SUIT YOUR NEEDS.

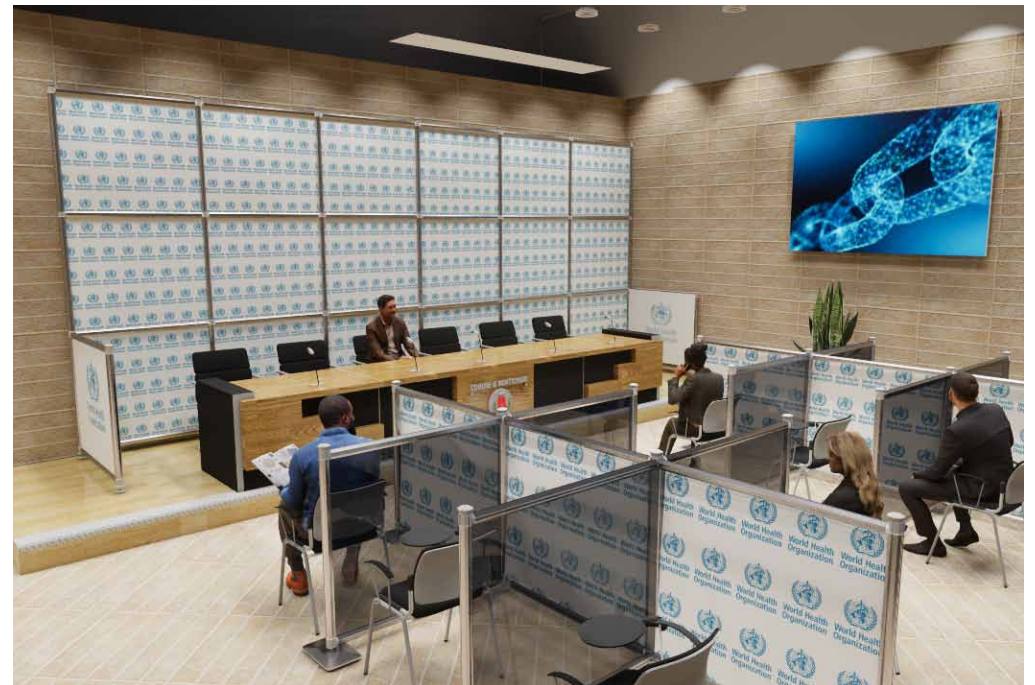


Using premium solutions for design-led environments

- High quality, premium finishes
- Clad with a range of materials
- Integrate functional features
- Personalise and customise to your environment
- Made using aluminium framework
- Easy to pack down when not in use
- Great for permanent, long-term solutions
- No tools required
- Easy to repurpose over time



SEND US A SCRIBBLE, AND WE
WILL DESIGN A SOLUTION TO
SUIT YOUR NEEDS.



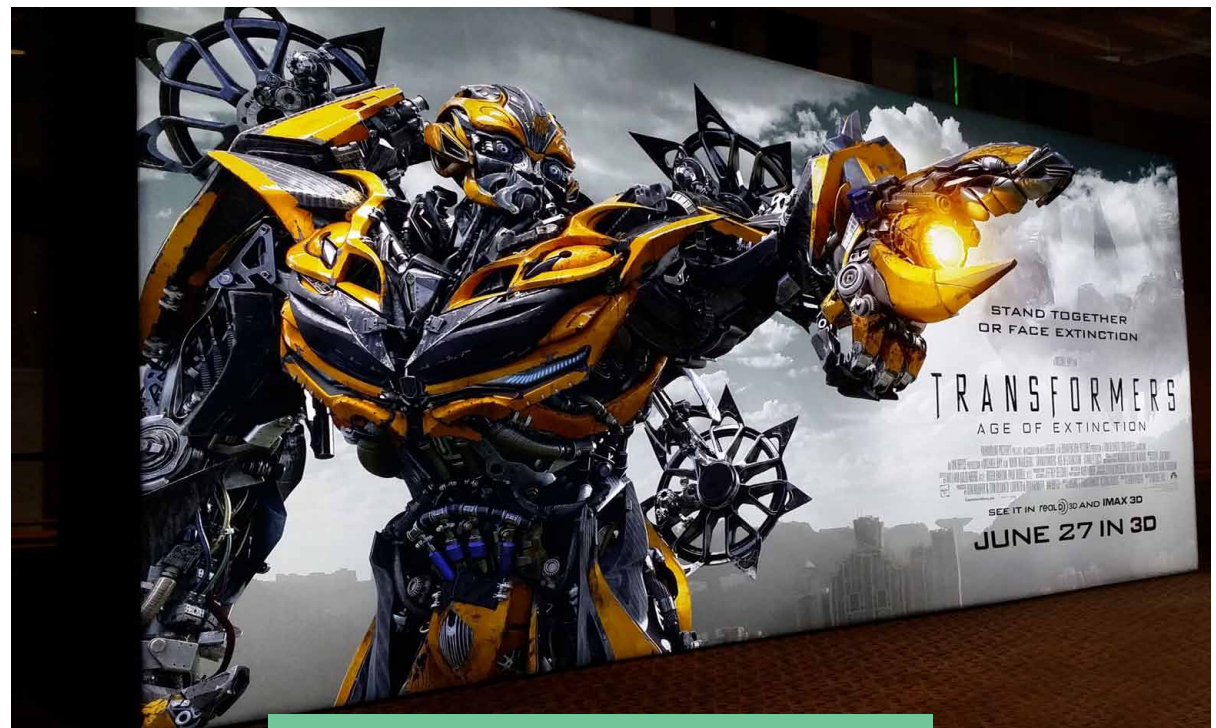


Backdrops

Use branded back walls to create a professional environment for delivering your key brand experiences! Keep it simple with a plain back wall, or customise with personalised graphics and curved features. Add lights to really grab attention.

For a quick solution that can be built in minutes, T3 is a great product to create professional, high-quality solutions that can be used time and time again!

- Quick and easy to build
- Clad with a range of materials
- Flexible for a whole range of environments and purposes
- No tools required
- Reusable, just simply change the graphics



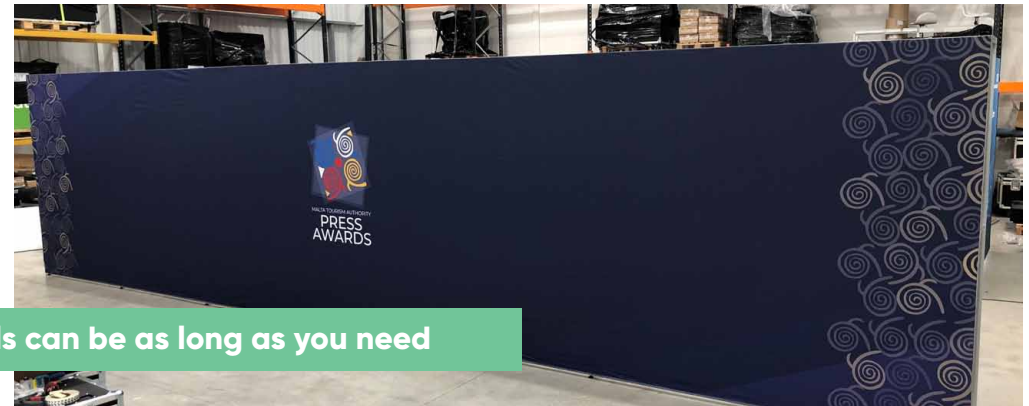
Backlit graphics transform your wall



Great opportunity for branding and graphics



Perfect backdrop for presentations in person or online



Walls can be as long as you need



Backdrops using green screen for video projection



Essentials

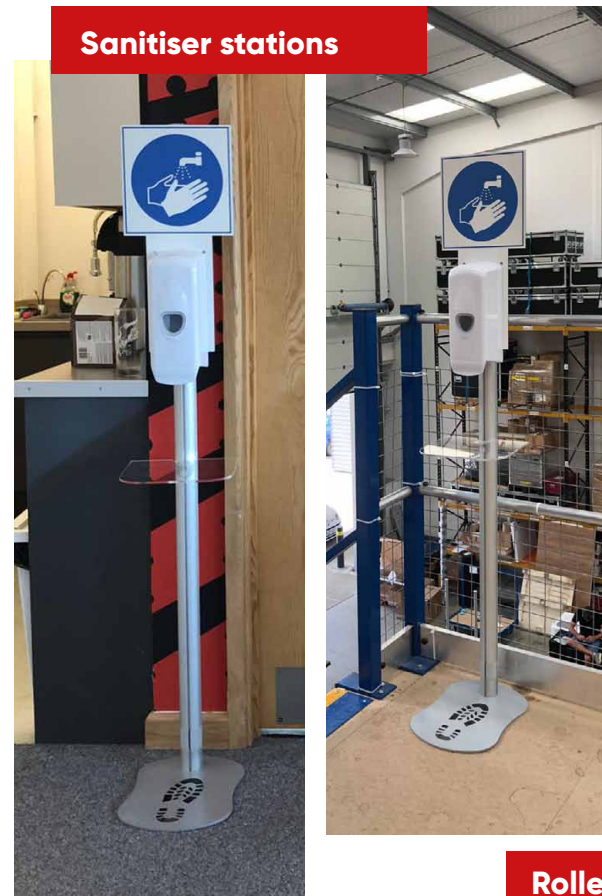
To complete your social distancing environments, you might want to consider these essentials. Simply add these products to your environment to protect, reduce risk, and provide information. All quick and easy to implement in a range of customisable sizes.

Floor stickers



Sneeze guards

Sanitiser stations



ATTENTION

Wash your hands regularly with soap and water.



Cover your mouth and nose while sneezing or coughing.



If you have fever, cough and difficulty breathing, seek medical care early.



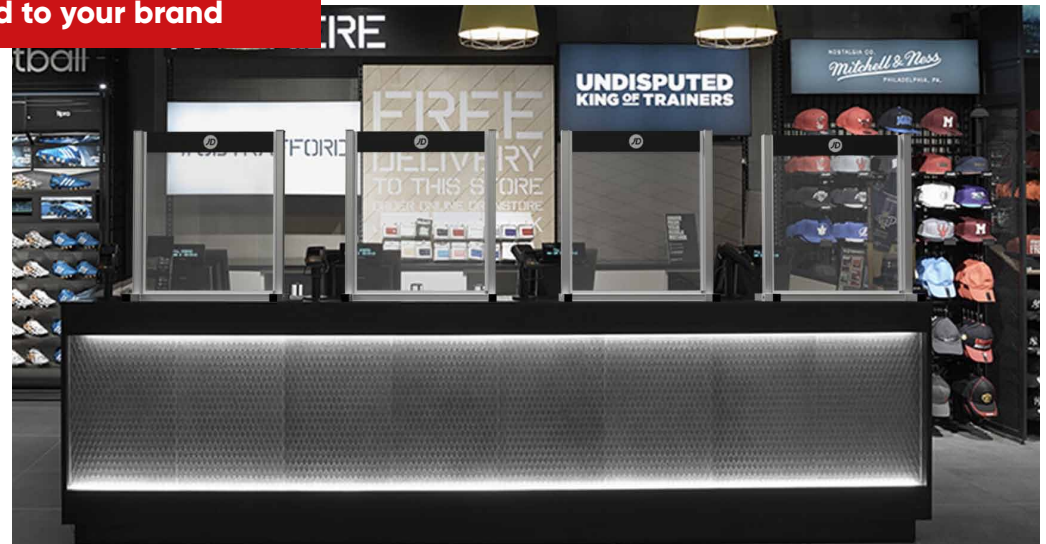
Roller banner signage

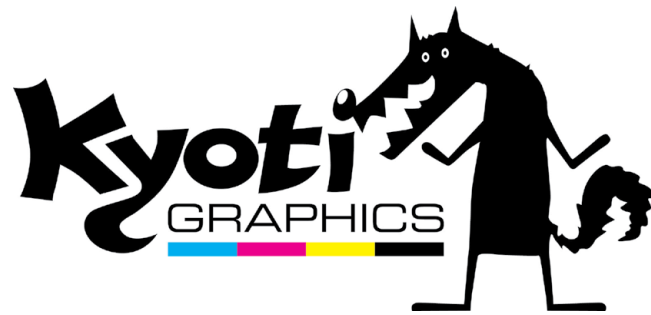


Complete sanitising and hygiene station



Sneeze guards tailored to your brand





.....

 DESIGN  BUILD  DELIVER

.....

sales@kyoti.co.uk
0800 0469899

Kyoti Graphics Limited
e-Innovation Centre,
Shifnal Road,
Priorslee,
Telford,
Shropshire, TF2 9FT

www.kyoti-graphics.co.uk

We make it happen.